



# Sports - Treadmill Belts



YONGLI - Engineer your movement



# Treadmill Belts

YongLi started the research on treadmill belt on 2004, According the former accumulated experience and experiments, YongLi nowadays can provide different kinds of treadmill belts, from Home-used belts to Commercial Gymnasium belts. Our treadmill belts are applied REACH, RoHS, PAHs and completely accord with the requirements from Europe and USA. By continuous improvements and non-stop research, YongLitreadmill belts are accepted by more and more customers and become a reliable products.



## Products&Quality

### Standard treadmill belts:

Thickness less than 1.8mm (Home used belts)

Code: S15/7, S14/31, S16/1, S18

Thickness 2.0~3.0mm(Home used and Commercial)

Code: S23, S25

Thickness 3.0~5.0mm(Commercial)

Code: S32, S46

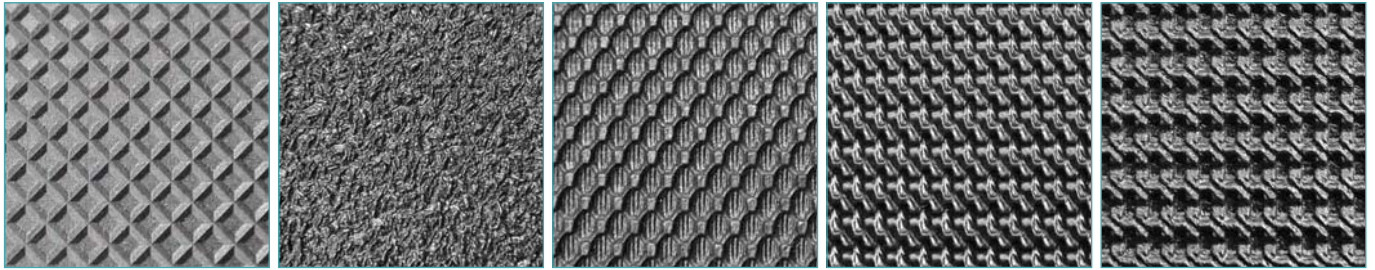
YongLi is experienced in conveyor-belt industry, however, treadmill belts require different standards on surface pattern, working noise and joint technology etc. For achieving these goals, YongLi invested large amount of research fund and human resource, all materials and production process are according ISO9001. So that we promises the stability of treadmill belts from different production batch.

YongLi has a reliable and advanced treadmill belts fabrication workshop which has 6 high frequency machines.

The daily capacity of endless treadmill belts are over 1800 pieces and our strict Quality-Check process will promise a stability and quality of the final products.



## Top Pattern



Type: ShallowDiamond

Type: Sandblast

Type: Golf

Type: Mini grip

Type: Coarse textured

## Bottom Fabric



Code: 22  
Material: Polyester

Code: 18  
Material: Spun

Code: 21 (optional)  
Material: Spun

Code: 17  
Material: Spun

## Technical data

Article number	Belt type	Top Pattern	Bottom Fabric		Total thickness mm	Weight Kg/M <sup>2</sup>	Effective pull at 1% elongation N/mm	Min. Diameter mm	Temperature range °C
			Number of plies	Code					
102022	S14/31	Sandblast	1	22	1.4	1.3	5	30	-15~+60
102023	S15/7	Golf	1	22	1.5	1.4	5	30	-15~+60
102008	S16/1	ShallowDiamond	2	18	1.6	1.5	7	40	-15~+60
102002	S18	Golf	2	18	1.8	1.5	7	40	-15~+60
102003	S23	Golf	2	18	2.3	2.0	8	50	-15~+60
102004	S25	Golf	2	17	2.5	2.2	8	50	-15~+60
102025	S32	Mini grip	2	17	3.2	3.0	10	60	-15~+60
102026	S46	Coarse textured	2	17	4.6	4.0	10	80	-15~+60



**SHANGHAI YONGLI BELTING CO.,LTD.**

ADDRESS: WEST OF XUHUA ROAD, XUJING TOWN,  
QINGPU DISTRICT, SHANGHAI, CHINA

TEL: 0086-21-59884359

FAX: 0086-21-59884382

WEBSITE: [www.yonglibelt.com](http://www.yonglibelt.com)

EMAIL: [info@yonglibelt.com](mailto:info@yonglibelt.com)



**YONGLI EUROPE B.V.**

ADDRESS: KOOLMAND 3, 1724 BC OUDKARSPHEL,  
NETHERLANDS

TEL: 0031-226-399928

FAX: 0031-226-393707

WEBSITE: [www.yonglibelting.com](http://www.yonglibelting.com)

EMAIL: [info@yonglibelting.com](mailto:info@yonglibelting.com)